

SPOT IT



ALPHABET

Alphabet 1/31

Diseñado por Noelia Hernández Bernal para English's Fun

SPOT IT



ALPHABET

Alphabet 2/31

Diseñado por Noelia Hernández Bernal para English's Fun

SPOT IT



ALPHABET

Alphabet 3/31

Diseñado por Noelia Hernández Bernal para English's Fun

SPOT IT



ALPHABET

Alphabet 4/31

Diseñado por Noelia Hernández Bernal para English's Fun

SPOT IT



ALPHABET

Alphabet 5/31

Diseñado por Noelia Hernández Bernal para English's Fun

SPOT IT



ALPHABET

Alphabet 6/31

Diseñado por Noelia Hernández Bernal para English's Fun

SPOT IT



ALPHABET

Alphabet 7/31

Diseñado por Noelia Hernández Bernal para English's Fun

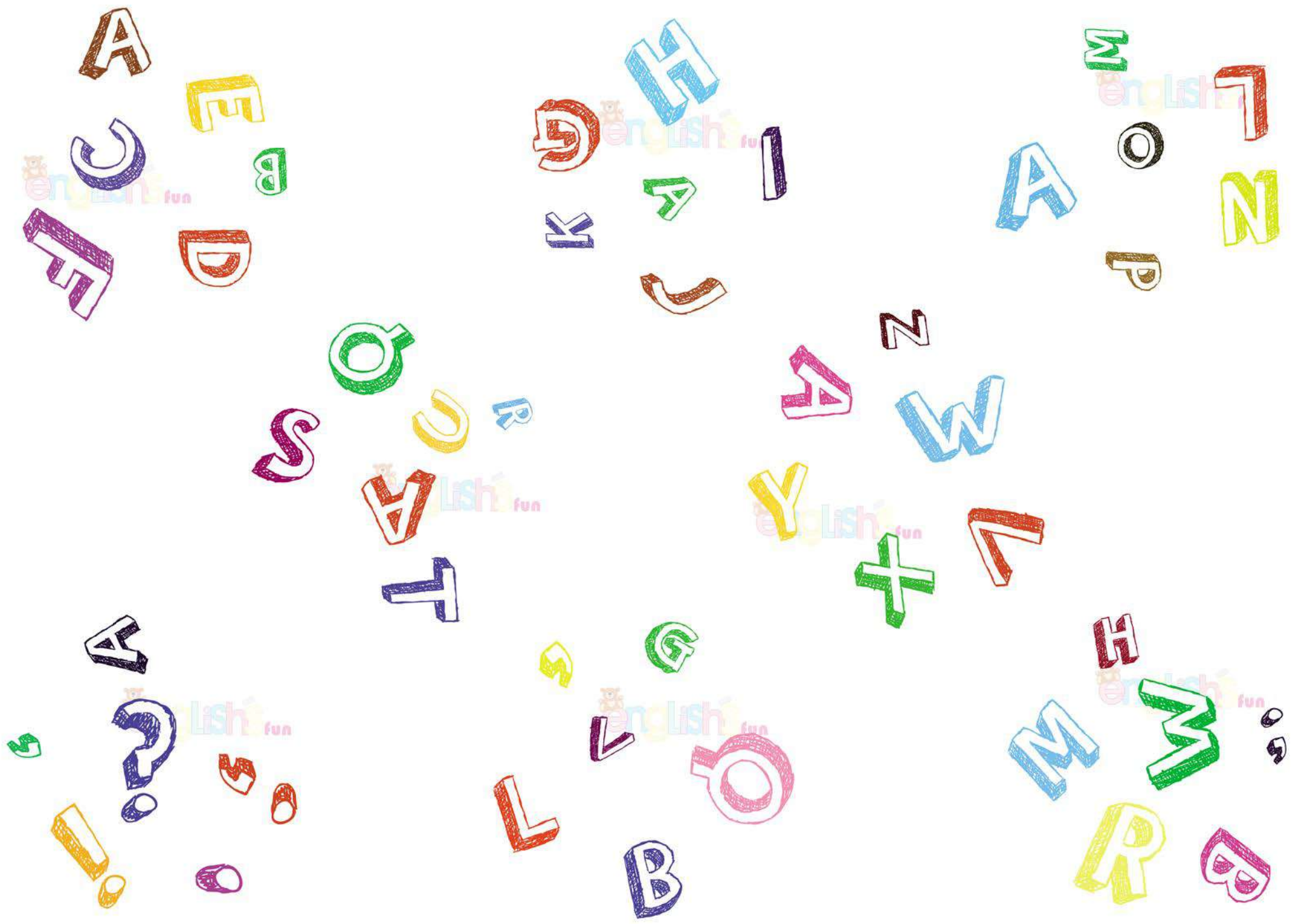
SPOT IT



ALPHABET

Alphabet 8/31

Diseñado por Noelia Hernández Bernal para English's Fun



SPOT IT



ALPHABET

Alphabet 9/31

Diseñado por Noelia Hernández Benndi para English's Fun

SPOT IT



ALPHABET

Alphabet 10/31

Diseñado por Noelia Hernández Benndi para English's Fun

SPOT IT



ALPHABET

Alphabet 11/31

Diseñado por Noelia Hernández Benndi para English's Fun

SPOT IT



ALPHABET

Alphabet 12/31

Diseñado por Noelia Hernández Benndi para English's Fun

SPOT IT



ALPHABET

Alphabet 13/31

Diseñado por Noelia Hernández Benndi para English's Fun

SPOT IT



ALPHABET

Alphabet 14/31

Diseñado por Noelia Hernández Benndi para English's Fun

SPOT IT



ALPHABET

Alphabet 15/31

Diseñado por Noelia Hernández Benndi para English's Fun

SPOT IT



ALPHABET

Alphabet 16/31

Diseñado por Noelia Hernández Benndi para English's Fun



SPOT IT



ALPHABET

Alphabet 1/131

Diseñado por Noelia Hernández Benmil para English's Fun

SPOT IT



ALPHABET

Alphabet 18/131

Diseñado por Noelia Hernández Benmil para English's Fun

SPOT IT



ALPHABET

Alphabet 19/131

Diseñado por Noelia Hernández Benmil para English's Fun

SPOT IT



ALPHABET

Alphabet 20/131

Diseñado por Noelia Hernández Benmil para English's Fun

SPOT IT



ALPHABET

Alphabet 21/131

Diseñado por Noelia Hernández Benmil para English's Fun

SPOT IT



ALPHABET

Alphabet 22/131

Diseñado por Noelia Hernández Benmil para English's Fun

SPOT IT



ALPHABET

Alphabet 29/131

Diseñado por Noelia Hernández Benmil para English's Fun

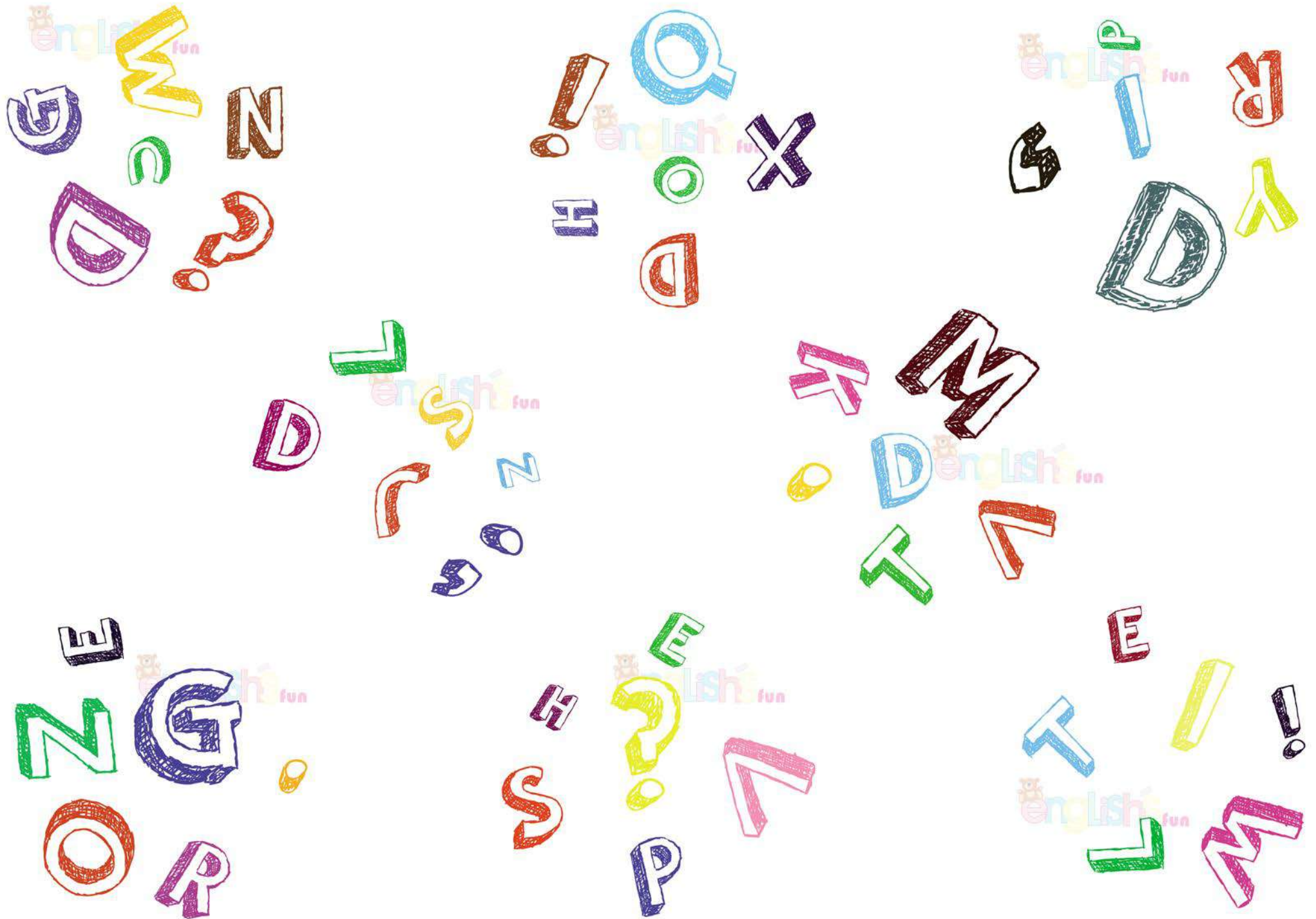
SPOT IT



ALPHABET

Alphabet 34/131

Diseñado por Noelia Hernández Benmil para English's Fun



SPOT IT



ALPHABET

Alphabet 25/31

Diseñado por Noelia Hernández Benndí para English's Fun

SPOT IT



ALPHABET

Alphabet 26/31

Diseñado por Noelia Hernández Benndí para English's Fun

SPOT IT



ALPHABET

Alphabet 27/31

Diseñado por Noelia Hernández Benndí para English's Fun

SPOT IT



ALPHABET

Alphabet 28/31

Diseñado por Noelia Hernández Benndí para English's Fun

SPOT IT



ALPHABET

Alphabet 29/31

Diseñado por Noelia Hernández Benndí para English's Fun

SPOT IT



ALPHABET

Alphabet 30/31

Diseñado por Noelia Hernández Benndí para English's Fun

SPOT IT



ALPHABET

Alphabet 31/31

Diseñado por Noelia Hernández Benndí para English's Fun

SPOT IT

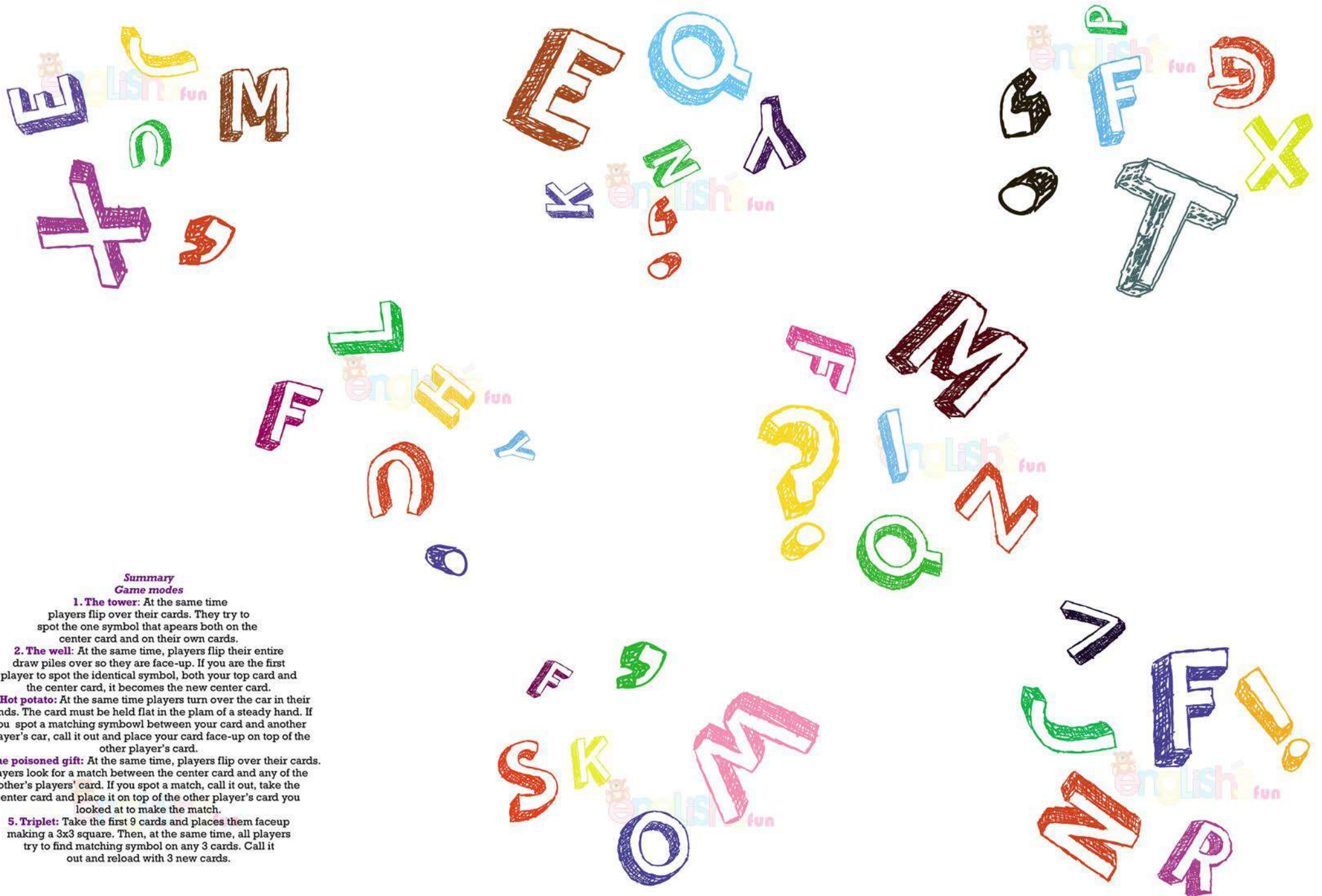
ALPHABET



ABCDEF , comma
GHIJKLM ; semicolon
NOPQRS ! exclamation mark
TUVWX ? question mark
YZ

Alphabet

Diseñado por Noelia Hernández Benndí para English's Fun



Summary
Game modes

- 1. The tower:** At the same time players flip over their cards. They try to spot the one symbol that appears both on the center card and on their own cards.
- 2. The well:** At the same time, players flip their entire draw piles over so they are face-up. If you are the first player to spot the identical symbol, both your top card and the center card, it becomes the new center card.
- 3. Hot potato:** At the same time players turn over the car in their hands. The card must be held flat in the plam of a steady hand. If you spot a matching symbol between your card and another player's car, call it out and place your card face-up on top of the other player's card.
- 4. The poisoned gift:** At the same time, players flip over their cards. Players look for a match between the center card and any of the other's players' card. If you spot a match, call it out, take the center card and place it on top of the other player's card you looked at to make the match.
- 5. Triplet:** Take the first 9 cards and places them faceup making a 3x3 square. Then, at the same time, all players try to find matching symbol on any 3 cards. Call it out and reload with 3 new cards.